

NuLOOQ navigator™ Reference Manual



Designed to help creative professionals work faster.



USER'S MANUAL



Copyright

Copyright © 2006 Logitech. All rights reserved. Logitech, the Logitech logo, and other Logitech marks are owned by Logitech and its affiliates and may be registered. All other trademarks are the property of their respective owners. Logitech assumes no responsibility for any errors that may appear in this manual. Information contained herein is subject to change without notice.

Table of Contents

Chapter 1 Introduction

Getting Started.....	1
Using The navring	1
Using The tooltuner dial	2
Using The triggerpoints	3
Installing the NuLOOQ navigator.....	4
System Requirements	4
Software Requirements	4
Installation Procedure.....	4
About This Guide	6

Chapter 2 The NuLOOQ navigator

NuLOOQ navigator Component Configurations	7
The tooltuner dial	7
Programmable triggerpoints	8
The navring	8
Scroll Navigation	9
Zoom Navigation	9
Static Value Control	9
Adobe Photoshop Static Value Control	10
Adobe InDesign Static Value Control	10
Adobe Illustrator Static Value Control	11
Dynamic Value Control	11
Adobe Photoshop Dynamic Value Control	13
Adobe Illustrator Dynamic Value Control	13

Chapter 3 Preference Pane

Configure Menu	14
Select Application	14
Add / Remove Application	14
Export Configuration	15
Import Configuration	15
Install Plug-ins	16
About NuLOOQ navigator	16
Configuration On / Off	16
General Commands	17
Use Defaults	17
Help	17
Revert	17
Apply	17
The navring Tab.....	18
Control	18
Assignment.....	18
Sensitivity	25

Speed	25
The tooltuner Tab	25
Control	26
Assignment.....	26
Sensitivity	26
Click Sound	26
The triggerpoints Tab.....	26
Control.....	26
Assignment.....	27

Chapter 4 NuLOOQ Support

Contact Us	28
Logitech Hardware Product Limited Warranty	28
Remedies.....	28
How to Obtain Warranty Support.....	28
Limitation of Liability	28
Duration of Implied Warranties	29
No Other Warranties	29

Appendix A Static Value Control Specifications

Photoshop Static Value Control.....	30
InDesign Static Value Control.....	32
Illustrator Static Value Control	33

Appendix B Dynamic Value Control Specifications

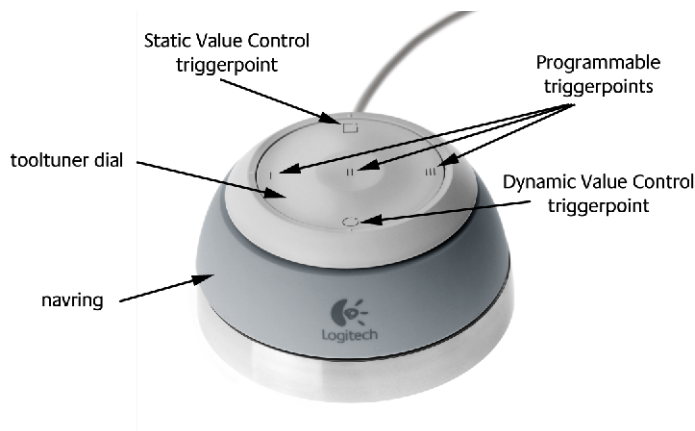
Photoshop Dynamic Value Control.....	34
Illustrator Dynamic Value Control	36

Appendix C End-User License Agreement (EULA)

Logitech Inc. Pre-Release Agreement	38
1.0 Confidential Information, Scope of Use and Tester Obligations	38
2.0 Logitech Obligations.....	38
3.0 Warranty Disclaimer.....	39
4.0 Term and Termination.....	39
5.0 Proprietary Rights.....	39
6.0 Export.....	40
7.0 General Provisions.....	40

Chapter 1 Introduction

The NuLOOQ *navigator*TM is the perfect creative partner for your keyboard, mouse or tablet. This innovative alternate-hand input device provides image and document scroll and zoom navigation, as well as static and dynamic option value control.



Getting Started

The NuLOOQ *navigator* includes the following components:

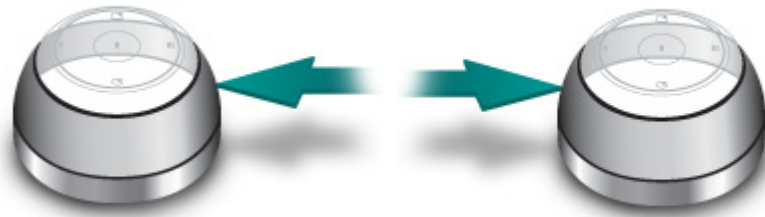
- The *navring*TM is the mobile ring encircling the body of the controller.
- The *tooltuner dial*TM is the flat scrollable disk on the top surface of the controller.
- Three programmable *triggerpoints*TM, numbered I, II, and III, across the centerline of the *tooltuner dial*'s surface.
- The Static Value Control *triggerpoint*, located at the twelve o'clock position on the *tooltuner dial*.
- The Dynamic Value Control *triggerpoint*, located at the six o'clock position on the *tooltuner dial*.

Each of these components can perform one or more functions, which by default are linked to specific features within the host application. These functions and their default settings are described below. For more in-depth information about the NuLOOQ *navigator* components, please refer to Chapter 2: “The NuLOOQ navigator” on page 7.

Using The *navring*

The *navring* gives you two basic navigation functions: Scroll and Zoom. You can Scroll an image or document by nudging the *navring* left, right, up or down. The *navring* moves only a small amount, yet a small nudge can quickly move an image or

document. The following default Scroll and Zoom configurations are applicable to Adobe® Illustrator® CS2, Adobe® InDesign® CS2, and Adobe® Photoshop® CS2.



Nudge navring to Scroll Left / Scroll Right



Nudge navring to Scroll Up / Scroll Down

The *navring* also twists in a clockwise or counterclockwise direction. Twisting the *navring* will zoom in or out of images in the host application.



Twist counterclockwise / clockwise to Zoom Out / Zoom In

Using The *tooltuner dial*

The *tooltuner dial* is a flat touch-sensitive disc located on the top of the NuLOOQ *navigator*. The *tooltuner dial* is enabled when you are working in Static or Dynamic

Value Control mode. See “Using The triggerpoints” below for information on entering Static or Dynamic Value Control mode.



While in either Value Control mode, simply glide your finger around the surface of the *tooltuner dial* to tune the current tool option value. By default, gliding in a clockwise direction increases the value, while gliding in a counterclockwise direction decreases the value. For more information on Static and Dynamic Value Control modes, see Chapter 2: “The NuLOOQ navigator” on page 7.

Using The *triggerpoints*

The surface of the *tooltuner dial* also contains five *triggerpoints*, which function as follows:



Programmable *triggerpoint* I is located at the nine o'clock position on the *tooltuner dial*. The three programmable *triggerpoints* can be configured to a large variety of custom commands. See Chapter 3: “The *triggerpoints* Tab” on page 26 for more information on configuring these *triggerpoints*.




Programmable *triggerpoint* II is located at the center position on the *tooltuner dial*. This *triggerpoint* is a soft touch *triggerpoint*. A quick tap is all that is required.



Programmable *triggerpoint* III is located at the three o'clock position on the *tooltuner dial*.




The Static Value *triggerpoint* is located at the twelve o'clock position on the *tooltuner dial*, and is indicated by a square . Pressing the Static Value *triggerpoint* enables Static Value Control mode. Pressing it a second time will exit Static Value Control mode.

NOTE

YOU MUST BE USING A SUPPORTED TOOL WITHIN ADOBE PHOTOSHOP, INDESIGN, OR ILLUSTRATOR IN ORDER TO USE STATIC VALUE CONTROL.

For more information on Static Value Control, see “Static Value Control” on page 9.



The Dynamic Value *triggerpoint* is located at the six o'clock position on the *tooltuner dial*, and is indicated by a circle . Pressing the Dynamic Value *triggerpoint* enables Dynamic Value Control mode. Pressing it a second time will exit Dynamic Value Control mode.

NOTE

YOU MUST BE USING A SUPPORTED TOOL WITHIN ADOBE PHOTOSHOP OR ADOBE ILLUSTRATOR IN ORDER TO USE DYNAMIC VALUE CONTROL.

For more information on Dynamic Value Control, see “Dynamic Value Control” on page 11.

Installing the NuLOOQ navigator

System Requirements

System requirements for NuLOOQ *navigator* installation are as follows:

- **O/S:** V10.4.4 or greater
- **Processor:** PowerPC G5 or greater
- **Memory:** 1 GB or greater
- **Disk space:** 50 MB

Software Requirements

In order to take full advantage of the NuLOOQ *navigator's* functionality, we recommend that you have some or all of the following applications installed prior to installing your NuLOOQ *navigator*:

- Adobe® Illustrator® CS2
- Adobe® InDesign® CS2
- Adobe® Photoshop® CS2

Installation Procedure

The following steps will guide you through the process of installing the NuLOOQ Professional Series™ v.1 software application:

1. Insert the NuLOOQ Professional Series CD-ROM into your system's CD drive. A Finder window will appear, with several icons.
2. Double-click on Install NuLOOQ Professional.mpkg to start the NuLOOQ Professional Series installation.

NOTE

TO EXIT THE INSTALLER AT ANY POINT DURING THE INSTALLATION PROCESS, CLICK THE “X” BUTTON AT THE TOP LEFT CORNER OF THE INSTALLER PANE. DOING SO WILL CLOSE THE INSTALLER AND CANCEL THE INSTALLATION PROCEDURE.

3. From the Welcome screen, click Continue to begin the installation process.
4. Please read the information provided on the Important Information screen about the NuLOOQ Professional Series. You have the option to print or save this information for future reference, by clicking the Print or Save buttons at the bottom of the pane.

Once you have read the information on this screen, click the Continue button to proceed with the installation.

NOTE

YOU CAN CLICK THE GO BACK BUTTON ON THIS OR ANY SUBSEQUENT SCREEN TO RETURN TO THE PREVIOUS STEP IN THE INSTALLATION PROCESS.

5. You will need to read and agree to the terms of the End-User License Agreement (EULA) in order to install the NuLOOQ Professional Series. Once you have read this text, you may click the Print or Save buttons at the bottom of the pane to keep the information for future reference.

NOTE

THE EULA TEXT IS ALSO PROVIDED IN APPENDIX C AT THE END OF THIS MANUAL FOR YOUR REFERENCE.

Once you have read and understand the terms of the EULA, click Continue to proceed with the installation. An Acceptance of Terms pane will pop-up, requiring you to either Agree or Disagree with the terms of the EULA.

If you click Disagree, the Installer will return you to the EULA screen, and the installation will not continue. To exit from the Installer at this point, click the “X” button at the top left corner of the Installer pane.

If you click Agree, the Installer will proceed to the next step.

6. In the Select Destination screen, the Installer will provide you with a list of possible drives on which the NuLOOQ Professional Series software may be installed. If your system has a single drive, that will be the only option provided. Select the drive onto which you wish to install the NuLOOQ Professional Series, and click Continue.
7. The Installation Type screen will appear, with the default Easy Installation selected. If you choose to proceed with the Easy Installation, the NuLOOQ *navigator* drivers, the NuLOOQ *tooldial* software application, and the NuLOOQ plug-ins for Adobe Illustrator, Adobe InDesign, and Adobe Photoshop will all be installed in the location specified in step 6.

Should you wish to customize your installation, click the Customize button. The Custom Install screen will appear. Check the box next to the NuLOOQ Professional Series components you wish to install, including the NuLOOQ navigator, as well as the NuLOOQ *tooldial* software and plug-ins; and uncheck the box next to any component you do not wish to install.

If you decide to install all NuLOOQ Professional Series components, simply click on the Easy Installation button at the bottom left of the Custom Install screen to return to the Installation Type screen.

When you have configured the Installation Type to your desires, click the Install button to install the NuLOOQ Professional Series software onto your system.

NOTE

IF YOU HAVE PREVIOUSLY INSTALLED THE NULOOQ PROFESSIONAL SERIES ON YOUR SYSTEM, THE INSTALL BUTTON WILL BE REPLACED BY THE UPGRADE BUTTON. EITHER BUTTON WILL INSTALL THE NULOOQ PROFESSIONAL SERIES SOFTWARE COMPONENTS AS YOU HAVE SPECIFIED IN STEP 6.

WARNING

CLICKING THE INSTALL/UPGRADE BUTTON WILL INITIATE THE ACTUAL SOFTWARE INSTALLATION, SO BE SURE THAT YOU HAVE CONFIGURED THE INSTALLATION TYPE AND DESTINATION TO YOUR SATISFACTION BEFORE CLICKING THIS BUTTON.

If the Installer encounters a problem during the installation process, an alert pane will appear with information as to the specific error that occurred. You should try to correct the problem indicated in this error message before attempting to install

the NuLOOQ Professional Series software again. If you are unable to correct the problem, contact the Support number for the NuLOOQ Professional Series (see Chapter 4: “NuLOOQ Support” on page 28 for Support contact information).

8. Once the software installation has run, the NuLOOQ *tooldial* Console will open automatically. If you are starting a thirty day trial period, click on the Activate Later button on the Activation screen. If you have purchased the NuLOOQ *tooldial* software, please enter the serial number and authorization code in the appropriate fields, and click the Activate button.
9. After Activating the NuLOOQ *tooldial*, the Installer will require that you restart your system in order to complete the NuLOOQ Professional Series installation. Click on the Restart button at the bottom of the final Installer screen to restart your machine.
10. You are now ready to begin using the NuLOOQ Professional Series.

About This Guide

For clarity, this manual uses several notational conventions to present information. Lists of items or procedures that do not need to be performed in sequential order appear in bullet format:

- Item 1
- Item 2

TIP

TIPS OFFER INFORMATION ABOUT USEFUL TRICKS AND SHORTCUTS.

NOTE

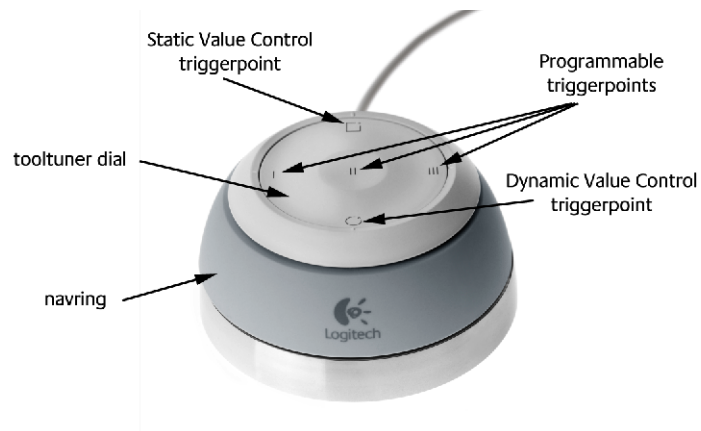
NOTES PROVIDE DETAILED EXPLANATIONS AND OTHER IMPORTANT INFORMATION.

WARNING

WARNINGS ALERT YOU TO POTENTIALLY HARMFUL CONSEQUENCES SUCH AS LOSS OF CONFIGURATIONS OR DATA.

By convention, the term “click” is used to refer to a left-button mouse click, as in “Click on “Add Application...” to open a Finder window.”

Chapter 2 The NuLOOQ navigator



NuLOOQ navigator Component Configurations

The NuLOOQ navigator components are linked to the following features:

- Small movements of the *navring* give you access to horizontal and vertical Scrolling and fluid dynamic Zoom capabilities.
- The touch-sensitive *tooltuner dial* enables you to fluidly adjust tool option values.
- Programmable *triggerpoints* allow you to launch programs, commands, map modifier keys and NuLOOQ *tooldials*TM, with a single click.
- *Static Value Control* provides one-click access to a comprehensive tool adjustment center, allowing you to adjust tool option values without interrupting your workflow.
- *Dynamic Value Control* allows you to dynamically adjust your tool option values while you paint.

For information on the basic functionality of these components, please refer to “Getting Started” on page 1. In addition, most of these components can be independently configured to suit your unique needs, using the NuLOOQ navigator’s Preference Pane (see “Preference Pane” on page 14 for more information about configuring the NuLOOQ navigator). The specific attributes of the NuLOOQ navigator components will be described in detail in the following sections.

The *tooltuner dial*



The *tooltuner dial* on the upper surface of the NuLOOQ navigator gives you precise control over tool option values. Value adjustments are made by gliding your finger

around the surface of the *tooltuner dial* in the clockwise or counterclockwise direction. The *tooltuner dial* orientation is configurable within the NuLOOQ *navigator* Preference Pane, but the default state is that gliding around the *tooltuner dial* in a clockwise direction increases the value, while gliding in a counterclockwise direction decreases the value. The NuLOOQ *navigator* supports two Value Control modes: Static and Dynamic. In Static Value Control mode, you can set option values and then start drawing. In Dynamic Value Control mode, you can change option values and draw simultaneously.

Programmable *triggerpoints*



The NuLOOQ *navigator* contains three fully programmable *triggerpoints*, located on the *tooltuner dial*. These *triggerpoints* are labelled I, II and III, and are found in the nine o'clock, center, and three o'clock positions on the *tooltuner dial*.

These programmable *triggerpoints* can be configured to meet your specific needs. They are configured from within the NuLOOQ *navigator* Preference Pane. For more information on configuring these *triggerpoints*, see “The *triggerpoints* Tab” on page 26.

The *triggerpoints* can be configured to execute shortcut keys to provide quick access to your most frequently used functions. For example, you can set a *triggerpoint* to trigger the Undo command within Adobe Photoshop, or modifier keys such as CTRL or CMD. Alternately, they can be configured to bring up a NuLOOQ *tooldial* Menu. Please refer to the NuLOOQ *tooldial* User’s Manual for more information on *tooldials*.

The *triggerpoints* are application-aware. Your *triggerpoint* configuration for Adobe Photoshop is valid only when Photoshop is running and active.

In addition to the three configurable *triggerpoints*, the *tooltuner dial* contains two additional *triggerpoints*. The uppermost *triggerpoint* enables the Static Value Control feature, and the bottom *triggerpoint* enables the Dynamic Value Control feature. Please see the Static Value Control and Dynamic Value Control sections below for more information about these features.

The *navring*

The *navring*, which encircles the body of the NuLOOQ *navigator*, provides access to a variety of image or document navigation controls, including Scroll Left, Right, Up or Down, as well as Zoom In and Out.

Scroll Navigation

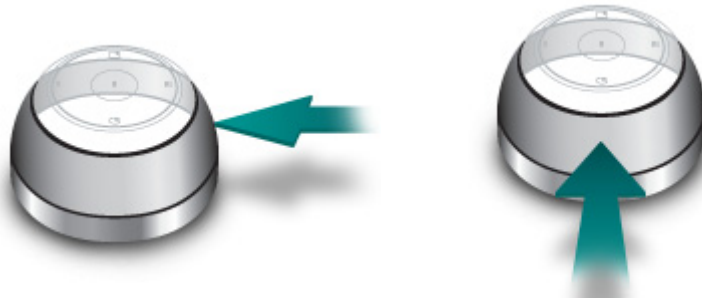


Image or document Scrolling is activated by gently pushing against the *navring*, or “nudging” it, either left, right, up or down. Nudge the *navring* up or down along the Y axis to scroll the graphic image vertically. Nudge the *navring* from left to right along the X axis to scroll the graphic image horizontally. Alternately, you can configure each of the nudge functions individually to activate host application features, key combinations, or pre-programmed results, in the *navring* tab of the Preference Pane (see “The *navring* Tab” on page 18 for more information). The *navring*’s degree of sensitivity to nudging is also configurable.

Zoom Navigation



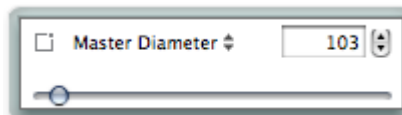
By default, you can adjust the Zoom level within the image or document by twisting the *navring*. Twisting clockwise zooms in, and twisting counterclockwise zooms out. The *navring* twist functions are fully configurable, meaning that you can change the twist orientation, adjust the degree of sensitivity, or assign completely different actions to the twist functions, in the *navring* tab of the Preference Pane (see “The *navring* Tab” on page 18 for more information).

Static Value Control



Controlling tool option values has never been easier. With Static Value Control, you can adjust virtually any tool options quickly or precisely, while keeping your cursor and your focus on your work. No need to move the mouse up to a palette or the option bar and then back; value adjustment is integrated into your workflow.

To adjust values, first ensure you are currently using a tool or have a current selection that allows options to be adjusted. Press the Static Value Control *triggerpoint* at the twelve o’clock position on the *tooltuner dial*. The Static Value icon on the *tooltuner dial* should light up and a feedback window should appear on your desktop.



NOTE

THE STATIC VALUE FEEDBACK WINDOW CAN BE MOVED TO ANY LOCATION ON THE SCREEN. THE NULOQ NAVIGATOR WILL REMEMBER THE LAST POSITION OF THE WINDOW WHEN RE-ENTERING STATIC VALUE CONTROL MODE.

Once you have entered Static Value Control mode, you can easily adjust tool options in one of several ways:

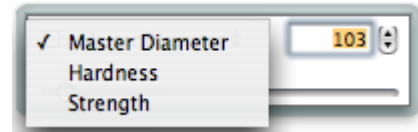
- Glide your finger around the surface of the tooltuner dial in a clockwise or counterclockwise direction to increase or decrease values;
- Use your mouse to adjust the slider in the Static Value window until you reach your desired value;
- Enter a value directly into the value indicator field on the Static Value window;
- Click on the Up/Down arrows to the right of the value indicator field, to increase or decrease the value by increments of one.

TIP

WHILE IN STATIC VALUE CONTROL MODE, YOU STILL HAVE ACCESS TO ALL NULOQ NAVIGATOR FUNCTIONS, INCLUDING THE THREE PROGRAMMABLE TRIGGERPOINTS AS WELL AS NAVIGATION VIA THE NAVRING.

Once you have reached your desired value, simply start drawing or typing and the new value will be immediately applied. To make additional adjustments to option values, just use one of the above methods, and the new settings will become active immediately.


Depending upon the tool currently selected, multiple options may exist. The current option being adjusted will be displayed in the Static Value window. To adjust values for a different option, you can change the current option selection in one of the following ways:



- Press CTRL+TAB or CTRL-SHIFT+TAB to toggle up and down through the options list.
- Click on the option name text in the Static Value window to open a pop-up menu listing all options with adjustable values available for the current tool. Select an option from this list to adjust values for that option.

NOTE

THE OPTION MENU IS SPECIFIC TO THE CURRENTLY SELECTED TOOL. IF YOU SELECT A DIFFERENT TOOL WITHIN THE HOST PROGRAM, THE LIST OF AVAILABLE OPTIONS WILL AUTOMATICALLY BE UPDATED TO REFLECT THOSE AVAILABLE FOR THE NEW TOOL.

Once you have selected an option, make any adjustments needed for that option. Then simply continue drawing or typing, and the value you set will be applied. When you are finished adjusting the value(s), click on the “X” symbol  in the upper left corner of the window, or press the Static Value Control *triggerpoint*, to exit Static Value Control mode.

Adobe Photoshop Static Value Control

Static Value Control functionality in Adobe Photoshop CS2 is based on selected tools, and the options available for each of those tools.

Not all tools and options may be accessible through the NuLOOQ navigator’s Static Value Control feature. A full list of tools and options supported in Adobe Photoshop can be found in Appendix A: “Static Value Control Specifications” on page 30.

Adobe InDesign Static Value Control

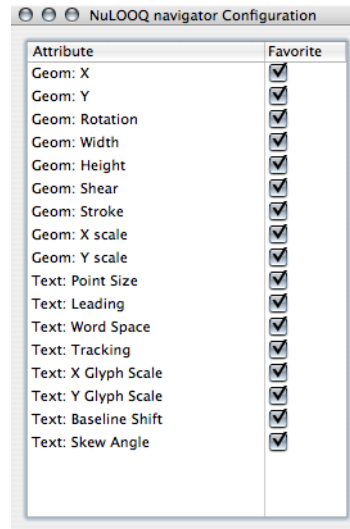
In Adobe InDesign CS2, Static Value Control functionality is based on the currently selected item, and is independent of whatever tool may be in use. The NuLOOQ nav-

igator automatically detects whether the current selection is a geometric object, an image, or a text box. Based on the nature of the selected item, the Static Value feedback window offers you the appropriate set of options available for adjustment.

TIP

CONFIGURE THE LIST OF OPTIONS THAT APPEARS IN THE OPTION POP-UP MENU IN ORDER TO SIMPLIFY YOUR WORKSPACE BY HIDING OPTIONS YOU DON'T WISH TO MODIFY.

As the number of options available for adjustment can be extensive, the NuLOOQ navigator provides you the ability to select which options will appear in the Static Value window's option pop-up menu, and which will be hidden. To configure the options that will appear in the Static Value window's option menu, click on the menu text and select "Configure NuLOOQ navigator" from the bottom of this list to open the Configure dialog window.



Once the Configure dialog has been opened, check or uncheck the boxes next to the various available options to show or hide those options in the Static Value window. The settings here are universal for Adobe InDesign, and will be valid each time you run InDesign.

For more information on the options available in Adobe InDesign, please see Appendix A: "Static Value Control Specifications" on page 30.

Adobe Illustrator Static Value Control

Static Value Control functionality in Adobe Illustrator CS2 is based on the currently selected item, and is independent of whatever tool may be in use. The NuLOOQ navigator automatically detects the nature of the selected item, and makes available those options that can be adjusted via the *tooltuner dial*.

For more information on the options available in Adobe Illustrator, please refer to Appendix A: "Static Value Control Specifications" on page 30.

Dynamic Value Control



The creation of advanced designs is now possible using the Dynamic Value Control functionality of the NuLOOQ navigator. Rather than drawing with a single fixed option value, you can now change option values as you are actually drawing. For example, you can change the brush size while you are in the act of drawing a line, or change the opacity, or both. Use this advanced functionality to enhance your creativity.

Dynamic Value Control uses the pen pressure or pen tilt functionality built into a number of applications, including Adobe Photoshop CS2 and Adobe Illustrator CS2.

You can configure the Dynamic Value Control feature to adjust values based on either pen pressure or pen tilt.

NOTE

YOU WILL NEED TO ENSURE THAT PHOTOSHOP OR ILLUSTRATOR ARE CONFIGURED PROPERLY FOR PEN PRESSURE OR PEN TILT TO CORRECTLY USE THE DYNAMIC VALUE CONTROL FUNCTION. IN PHOTOSHOP, GO TO THE BRUSH PALETTE, AND UNDER BRUSH TIP SHAPE OPTIONS VERIFY THAT EITHER PEN PRESSURE OR PEN TILT IS SPECIFIED FOR THE CONTROL SETTING. IN ILLUSTRATOR, DOUBLE-CLICK ON BRUSH STYLE AND CONFIRM THAT EITHER PEN PRESSURE OR PEN TILT IS SET FOR ONE OF THE BRUSH TIP OPTIONS. FOR MORE INFORMATION ON HOW TO CONFIGURE THIS FUNCTIONALITY WITHIN PHOTOSHOP OR ILLUSTRATOR, PLEASE REFER TO THE DOCUMENTATION ACCOMPANYING THOSE APPLICATIONS.

To make dynamic value adjustments, first ensure that the proper tool or brush is selected. Press the Dynamic Value Control *triggerpoint*, located in the six o'clock position on the *tooltuner dial* and indicated with a circle. The Dynamic Value Control *triggerpoint* should light up, and a feedback window should appear. The Dynamic Value feedback window will display one of three options:

- Pressure (0 - 200)
- Tilt X (-100 - 100)
- Tilt Y (-100 - 100)


Click on the option text and confirm that the option displayed is appropriate based on the selection you made within the application. For example, if in Adobe Photoshop Pen Pressure was used to control brush size, then you will need to ensure that the Dynamic Value window displays Pressure as the current value control method.

NOTE

AS STATED ABOVE, YOU CAN CONFIGURE THE DYNAMIC VALUE CONTROL FEATURE TO UTILIZE EITHER PEN PRESSURE OR PEN TILT FOR VALUE CONTROL. NOTE THAT THIS FEATURE WILL SIMULTANEOUSLY ADJUST ALL TOOLS AND/OR OPTIONS THAT HAVE BEEN CONFIGURED FOR YOUR SELECTED TYPE OF DYNAMIC VALUE SUPPORT WITHIN THE HOST PROGRAM. IF YOU WISH TO USE THE DYNAMIC VALUE CONTROL FEATURE TO ADJUST A SINGLE TOOL OR OPTION, YOU NEED TO MAKE SURE THAT ITEM IS THE ONLY TOOL OR OPTION COFIGURED FOR PRESSURE (OR TILT) DYNAMIC VALUE SUPPORT WITHIN THE HOST PROGRAM.

NOTE

TABLET USERS SHOULD BE AWARE THAT IF THE DYNAMIC VALUE CONTROL FEATURE IS CONFIGURED TO UTILIZE PEN PRESSURE FOR VALUE ADJUSTMENTS, THEN ENABLING DYNAMIC VALUE CONTROL WILL DISABLE PRESSURE FOR YOUR TABLET. IF THE DYNAMIC VALUE CONTROL FEATURE IS CONFIGURED TO UTILIZE PEN TILT, THEN TILT WILL BE DISABLED FOR THE TABLET. THIS ARRANGEMENT PROVIDES UNIQUE FLEXIBILITY FOR ADJUSTING MULTIPLE OPTION VALUES, AS YOU MAY USE PRESSURE (OR TILT) TO ADJUST ONE SET OF VALUES VIA THE NULOOQ NAVIGATOR, WHILE USING TILT (OR PRESSURE) TO ADJUST OTHER VALUES VIA THE TABLET.

Next, start drawing with the mouse or tablet pen, and simultaneously glide your finger clockwise or counterclockwise around the surface of the *tooltuner dial* to decrease or increase values. Depending on how the host application is configured, the brush size may increase or decrease, or become lighter or darker, and so forth. When you have reached your desired pressure or tilt value, simply lift your finger from the *tooltuner dial* to continue drawing at a constant value. You can make additional adjustments at any time while working in Dynamic Value Control mode. When you are finished making adjustments to the dynamic values, click the “X” symbol  in the upper left corner of the Dynamic Value window, or press the Dynamic Value Control *triggerpoint* once more, to exit Dynamic Value Control mode.

If you are working in Dynamic Value Control mode, and wish to adjust a static value, simply press the Static Value Control *triggerpoint* at the twelve o'clock position on the *tooltuner dial*. The Dynamic Value window will be replaced by the Static Value window, and you can then adjust your static value(s) as needed. (See “Static Value Control” on page 9 for more information on adjusting static values.) Pressing the Dynamic Value Control *triggerpoint* while in Static Value Control mode will reopen the Dynamic Value window, and you may continue your work in Dynamic Value Control mode. In this way, you can toggle back and forth between the Static and Dynamic Value Control modes, while working in Photoshop or Illustrator.

Please refer to the following sections for more details on dynamic value control support within Adobe Photoshop and Adobe Illustrator.

Adobe Photoshop Dynamic Value Control

Virtually all brush tools in Adobe Photoshop provide one to several options that can be dynamically adjusted. The value range supported depends upon the application setup. For a variety of tools in the brush palette Photoshop provides options for minimum and maximum pressure or tilt value, and the amount of jitter. Based on those settings, the NuLOOQ *navigator*'s Dynamic Value Control feature will support drawing between the minimum and maximum defined values. For more information on adjusting these values, please refer to your Adobe Photoshop documentation.

A full list of the Photoshop tools and options that can be dynamically controlled can be found in Appendix B: “Dynamic Value Control Specifications” on page 34.

TIP

REMEMBER THAT THE DYNAMIC VALUE CONTROL FEATURE WORKS AS YOU DRAW, ALLOWING YOU TO FLUIDLY ADJUST PRESSURE OR TILT VALUES WITHOUT INTERRUPTING YOUR PEN STROKES.

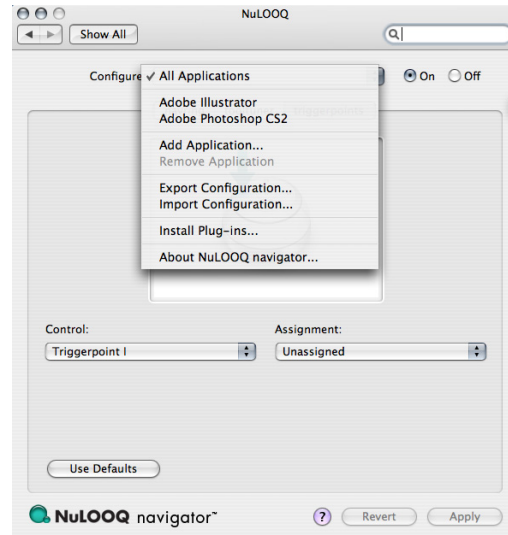
Adobe Illustrator Dynamic Value Control

Adobe Illustrator supports Dynamic Value Control via pen pressure for certain tools, such as various Symbolism and Brush tools. More information on configuring Illustrator tools for pressure or tilt can be found in your Adobe Illustrator documentation.

A full list of the tools and options that can be dynamically controlled can be found in Appendix B: “Dynamic Value Control Specifications” on page 34.

Chapter 3 Preference Pane

The NuLOOQ *navigator*'s Preference Pane includes configuration options for customizing the NuLOOQ *navigator* to your unique purposes. It also contains information about your NuLOOQ *navigator*, as well as links to the NuLOOQ *navigator* Help system and Support network.



Configure Menu

The Configure pop-up menu at the top of the Preference Pane allows you to select an application to which you want to apply the NuLOOQ *navigator* settings configuration, or to configure the list of available applications.

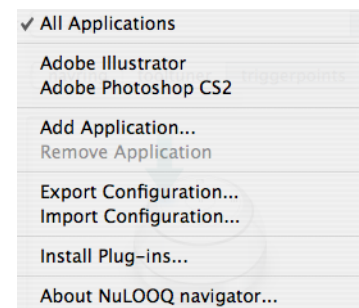
The following sections describe the various options on this menu.

Select Application

The NuLOOQ *navigator* allows you to create a standard configuration to be applied across all applications, or unique configurations specific to each host application. Simply select the application for which you wish to configure the NuLOOQ *navigator* from the list of applications at the top of the Configure menu. If you wish to create a standard configuration of settings for use with all applications, select All Applications. Once you have adjusted your preferences and hit the Apply button, your custom configuration will be mapped to the NuLOOQ *navigator* for use whenever you are working in the selected host application(s).

Add / Remove Application

The Add Application menu item allows you to create application-specific configurations for any host program on your computer. Click on "Add Application..." to open a Finder window. Browse to the location of the application for which you wish to create a NuLOOQ *navigator* configuration. Select the application within the Finder window; the Open button on the Finder window will become active. Click the Open button, and your selected application will be added to the list of applications in the Configure pop-up menu in the Preference Pane. NuLOOQ *navigator* settings for that



application can now be configured. Refer to the following sections for information on configuring the NuLOOQ *navigator*.

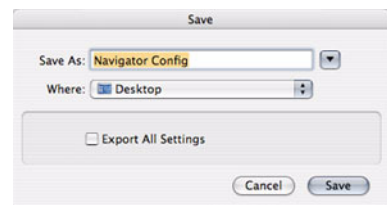
To remove an application from the Configure pop-up menu, first verify that the application you wish to remove appears on the Configure menu. Select the application on this menu, and click on “Remove Application...”. You will be requested to confirm that you wish to remove the selected configuration. Once you have confirmed this, the application will be removed from the Configure menu, and your NuLOOQ *navigator* configuration for that application will be deleted.

NOTE

THE REMOVE APPLICATION OPTION WILL ONLY ALLOW YOU TO REMOVE APPLICATIONS THAT HAD BEEN ADDED TO THE CONFIGURE MENU VIA THE ADD APPLICATION OPTION. YOU WILL NOT BE ABLE TO REMOVE ANY OF THE ORIGINAL ADOBE APPLICATIONS.

Export Configuration

You can export NuLOOQ *navigator* configurations for selected individual applications, or the All Applications configuration. First, select the application configuration you wish to export from the Configure menu. With the application selected, click on Export Configuration in the Configure menu. A Save window will appear, allowing you to specify the filename and location to which you want to save the exported configuration. The export file will have the extension “.navigator”. Once you have specified this information, press the Save button to generate the export file. By default, the currently selected application configuration will be exported.

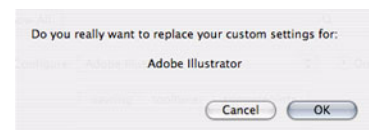


If you wish to export the configuration for All Applications, click the Export All Settings checkbox in the Save window. This will export the NuLOOQ *navigator* All Applications configuration, rather than the configuration for the selected application.

Import Configuration

To import a NuLOOQ *navigator* configuration, select Import Configuration from the Configure menu. Doing so will bring up a Finder window, from which you can browse to the location of the NuLOOQ *navigator* configuration file you wish to import. Files appropriate for importing will have the extension “.navigator”. When you have specified the filename and location, click the Open button to import the file.

Only one configuration may exist per application. If the configuration you are importing is for an application that already has an existing configuration, a pop-up window will appear verifying that you wish to replace the existing configuration with the imported file. Click OK to complete the file import process.



WARNING

THE EXISTING CONFIGURATION DATA CANNOT BE RETRIEVED AFTER OK IS CLICKED. IF YOU WISH TO SAVE THE CONFIGURATION DATA FOR FUTURE RETRIEVAL, YOU MUST EXPORT IT TO A FILE BEFORE REPLACING IT WITH THE IMPORTED CONFIGURATION.

Install Plug-ins

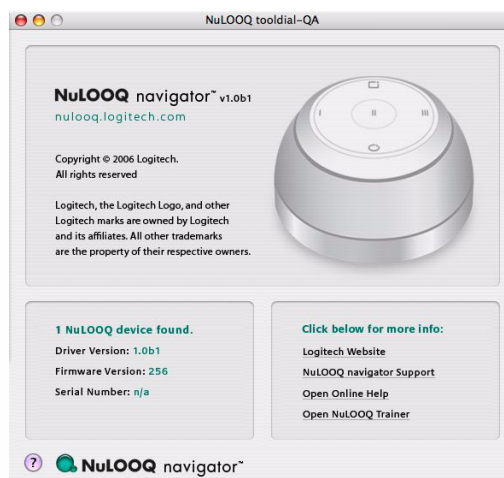
The Install Plug-ins option allows you to install the NuLOOQ *navigator* plug-ins for Adobe Photoshop, Illustrator, and InDesign, if one or more of those applications was not installed on your system at the time you installed the NuLOOQ *navigator*.

Selecting Install Plug-ins will automatically launch the NuLOOQ Professional Series Installer. Simply continue through the installation process as you did when first installing the NuLOOQ Professional Series.

NOTE

INSTALLING PLUG-INS WILL NOT OVERWRITE ANY EXISTING NULOOQ NAVIGATOR CONFIGURATIONS.

About NuLOOQ *navigator*



Selecting “About NuLOOQ *navigator*” brings up a window with specific information about your version of the NuLOOQ *navigator*. This information includes:

- Number of NuLOOQ *navigator* Devices Found on your system.
- Driver Version
- Firmware Version
- Serial Number
- Support Information
- Help System

Configuration On / Off

The On and Off buttons to the right of the Configure menu give you the option to enable or disable the NuLOOQ *navigator* functionality for any application. Select the application you wish to enable or disable from the Configure menu. Then click either the On or Off button; clicking On will enable NuLOOQ *navigator* functionality for that application, while clicking Off will disable NuLOOQ *navigator* functionality for the selected application.

NOTE

YOU WILL STILL BE ABLE TO DEFINE AND EDIT CONFIGURATION SETTINGS FOR THOSE APPLICATIONS THAT HAVE THE NULOOQ NAVIGATOR FUNCTIONALITY DISABLED. HOWEVER, THE NULOOQ NAVIGATOR WILL NOT INTERACT WITH THOSE APPLICATIONS UNTIL FUNCTIONALITY IS ENABLED VIA THE ON BUTTON.

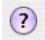
Specific application configurations will override any global settings. Therefore, if you select All Applications in the Configure menu, and click the Off button, the NuLOOQ navigator will be disabled for any applications without individually defined configuration settings. However, any individually configured applications that are set to On will remain enabled unless you specifically set those applications to Off.

General Commands

Use Defaults

Click the Use Defaults button at the bottom left of the tab area to reset the Preference Pane settings to the default levels. This button is available from each of the *navring*, *tooltuner*, and *triggerpoints* tabs. Clicking this button will reset the preferences for the currently selected tab only.

Help

You can access the online Help for the NuLOOQ *navigator* by clicking on the  button at the bottom right of the Preference Pane. This button will bring up the Help information for the current tab. You can then easily navigate from there to any other Help sections you may wish to access.

Revert

Click the Revert button at the bottom right of the Preference Pane to undo any recent changes made to the NuLOOQ *navigator* settings. Clicking this button will undo all changes made since the Apply button was last clicked, and will revert the Preference Pane to its last saved state.

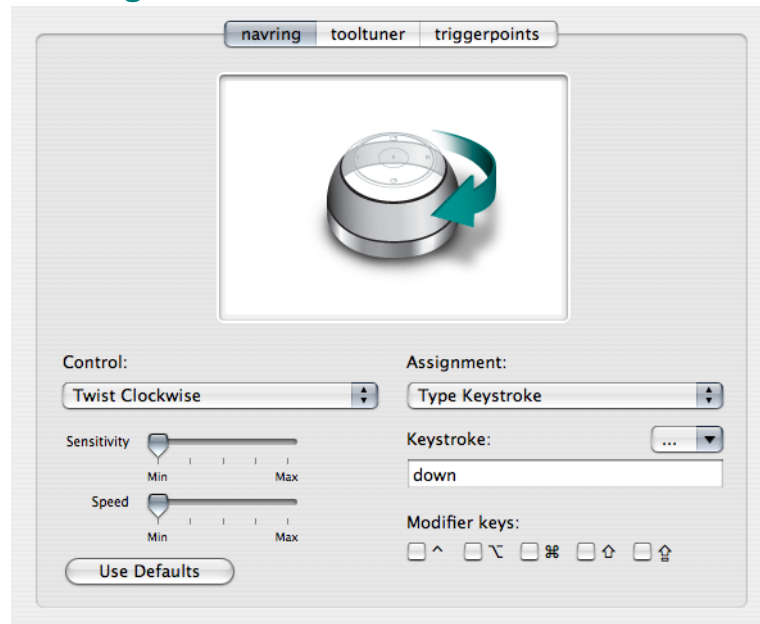
Apply

Click the Apply button at the bottom right of the Preference Pane to save any changes you have made to the NuLOOQ *navigator* settings. Saved settings will be applied to the application selected in the Configure menu at the top of the Preference Pane.

WARNING

ONCE YOU CLICK THE APPLY BUTTON, YOUR PREVIOUS SETTINGS WILL BE LOST, AND THE REVERT BUTTON WILL NOT BE USABLE UNTIL YOU MAKE ADDITIONAL CHANGES, SO MAKE SURE THAT YOU ARE SATISFIED WITH YOUR CHANGES BEFORE CLICKING APPLY.

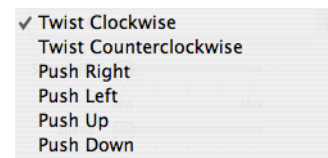
The *navring* Tab



The *navring* tab allows you to configure the *navring* controls of the NuLOOQ navigator.

Control

The Control pop-up menu on the *navring* tab allows you to select a particular *navring* function to configure. The available options are as shown in the following image:



Once you have selected the Control function that you wish to configure, use the Assignment menu just to the right of the Control menu to assign a particular action to that function. The Assignment menu is described in the following section.

Assignment

To assign an action to one of the *navring* functions listed in the Control menu, click the up and down arrows to the right of the Assignment pop-up menu. This will bring up a list of the various actions from which you can select. These options are as follows:

Unassigned

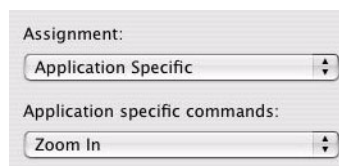
If you wish to assign no action to an item from the Control menu, select Unassigned, and no functionality will be applied when that item is activated.

Use Global Settings

Selecting Use Global Settings will revert to whatever action is assigned under the preferences established for All Applications, for this particular Control function. This feature allows you to assign global settings (for use with all applications) to certain Control functions, while configuring other Control functions specifically for one application. See “Select Application” on page 14 for more information on configuring preferences for All Applications versus for specific host applications.

Application Specific

The Application Specific option is only available when Adobe Photoshop CS2, Adobe InDesign CS2, or Adobe Illustrator CS2 is selected. Selecting Application Specific will make a second pop-up menu called Application Specific Commands become available.



When selected from the *navring* tab or the *triggerpoints* tab, the Application Specific Commands menu options provide control over Scroll and Zoom functionality within the selected Adobe host application. These options are as follows:

Zoom In

Selecting Zoom In will increase the Zoom level within the host application when the Control function is applied. By default, Zoom In is assigned to the *navring*'s Twist Clockwise Control function.

NOTE

SHOULD YOU OPT TO CHANGE THE ASSIGNMENT OF ONE OF THE APPLICATION SPECIFIC OPTIONS TO A DIFFERENT CONTROL FUNCTION, THE NULOOQ NAVIGATOR WILL AUTOMATICALLY REASSIGN THE OPPOSING OPTION TO THE OPPOSING CONTROL FUNCTION. FOR EXAMPLE, SHOULD YOU REASSIGN THE ZOOM IN ACTION TO TWIST CLOCKWISE, THE NULOOQ NAVIGATOR WILL AUTOMATICALLY REASSIGN ZOOM OUT TO TWIST COUNTERCLOCKWISE.

Zoom Out

Selecting Zoom Out will decrease the Zoom level within the host application when the Control function is applied. By default, Zoom Out is assigned to the *navring*'s Twist Counterclockwise Control function.

Scroll Left

Selecting Scroll Left will move the scroll bar to the left within the host application when the Control function is applied, thus moving the graphic document to the right. By default, Scroll Left is assigned to the *navring*'s Push Left Control function.

Scroll Right

Selecting Scroll Right will move the scroll bar to the right within the host application when the Control function is applied, thus moving the graphic document to the left. By default, Scroll Right is assigned to the *navring*'s Push Right Control function.

Scroll Up

Selecting Scroll Up will move the scroll bar up within the host application when the Control function is applied, thus moving the graphic document down. By default, Scroll Up is assigned to the *navring*'s Push Up Control function.

Scroll Down

Selecting Scroll Down will move the scroll bar down within the host application when the Control function is applied, thus moving the graphic document up. By default, Scroll Down is assigned to the *navring*'s Push Down Control function.

When selected from the *tooltuner* tab, the Application Specific Commands menu options allow you to specify whether the Static or Dynamic Value will be increased or

TIP

IF YOU WISH THE GRAPHIC DOCUMENT TO MOVE ON THE SCREEN IN THE SAME DIRECTION THAT YOU NUDGE THE NAVRING, THEN REASSIGN THE SCROLL ACTIONS TO THE OPPOSING CONTROL FUNCTIONS. ASSIGN SCROLL LEFT TO THE PUSH RIGHT CONTROL FUNCTION, AND SCROLL UP TO PUSH DOWN. THE NULOOQ NAVIGATOR WILL AUTOMATICALLY ASSIGN SCROLL RIGHT AND SCROLL DOWN FOR YOU.

decreased when you tune the *tooltuner dial* in a given direction. These options are as follows:

Decrease Value

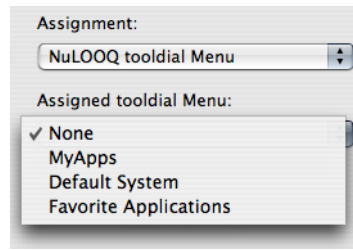
Selecting Decrease Value will decrease the Static or Dynamic Value of the current tool within the host application when you tune the *tooltuner dial* in the specified direction. By default, Decrease Value is assigned to the Tune Counterclockwise function.

Increase Value

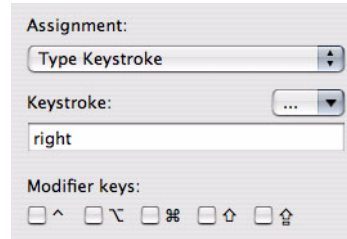
Selecting Increase Value will increase the Static or Dynamic Value of the current tool within the host application when you tune the *tooltuner dial* in the specified direction. By default, Increase Value is assigned to the Tune Clockwise function.

NuLOOQ *tooldial* Menu

The NuLOOQ *tooldial* Menu option is available from the *triggerpoints* tab. This option allows you to configure a NuLOOQ *navigator triggerpoint* to open an existing NuLOOQ *tooldial* Menu. Selecting this option will bring up the Assigned *tooldial* Menu pop-up menu from which you can select the specific *tooldial* Menu you wish to assign to the selected *triggerpoint*.



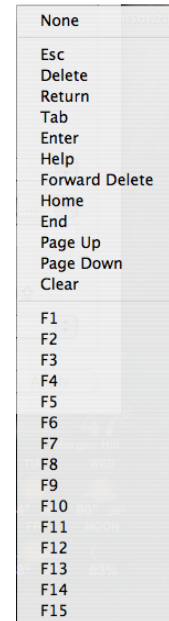
Type Keystroke



When you select the Type Keystroke option, you may then select a pre-defined function from a pop-up list, or enter a keystroke in the blank Keystroke field. To select an item from the Keystroke pop-up menu, simply click on the menu with the “...” display, which is located to the right of the “Keystroke:” line. The image to the right shows the items listed in the Keystroke pop-up menu.

To select one of the items from this menu, simply click on that item in the list. The menu will automatically close, and your selected item will be displayed in the Keystroke field.

Alternately, you can simply enter a single keystroke directly into the Keystroke field. Below the field is a row of modifier keys. These keys are available for use in conjunction with the keystroke you entered in the Keystroke field; or you can assign one or more modifier keys to a *triggerpoint* without any associated keystroke by simply leaving the Keystroke field blank. Click in the checkbox to the left of a modifier key in order to select it. You may select more than one modifier key at a time. The available modifier keys are:

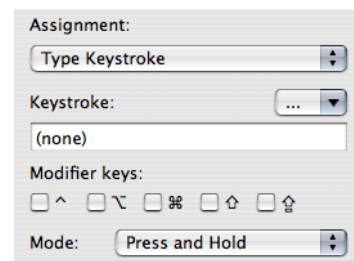


TIP

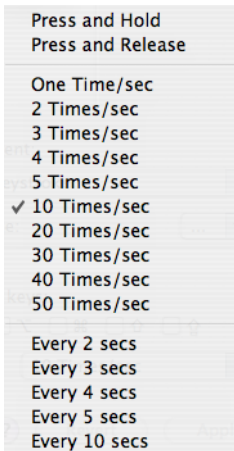
ASSIGNING A MODIFIER KEY DIRECTLY TO A TRIGGERPOINT ALLOWS YOU TO UTILIZE THAT MODIFIER KEY IN CONJUNCTION WITH THE MOUSE, WITHOUT HAVING TO MOVE YOUR HAND AND FOCUS TO THE KEYBOARD.

- Control 
- Alt 
- Apple 
- Shift 
- Caps Lock 

When the Type Keystroke assignment is selected from the *navigating* or *triggerpoints* tab, a Mode pop-up menu will be displayed below the Keystroke Modifier keys checkboxes. This menu allows you to configure the repeat properties of the Keystroke action, to facilitate using the NuLOOQ navigator with other applications such as Microsoft Excel.



The Keystroke Mode menu options are shown in the following image:

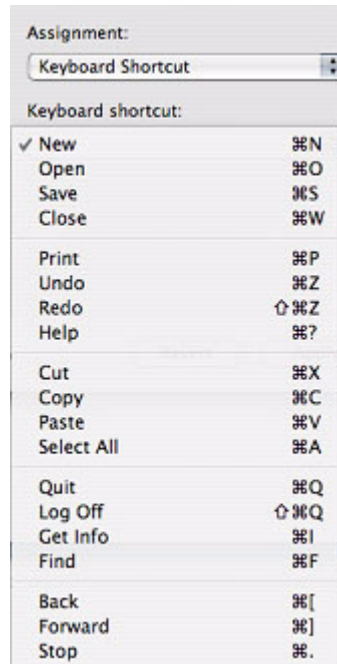


Selecting Press and Release will cause a single keystroke signal to be sent to the host application. Selecting Press and Hold will cause multiple keystroke signals to be sent, as long as the selected Control function is enabled. For example, if the Type Keystroke option is assigned to the Push Left *navring* Control function, then the Press and Hold mode will cause multiple keystroke signals to be sent for as long as you continue to push the *navring* to the left.

Selecting Press and Hold will automatically repeat the keystrokes at a system-defined rate. By selecting a rate from the lower portion of the Mode menu, you can specify the frequency at which you wish the repeating keystroke signals to be sent. The NuLOOQ *navigator* will send repeating keystroke signals to the host application at the frequency you have specified, until you release the selected Control function.

Keyboard Shortcut

When you select the Keyboard Shortcut option, you can select the specific shortcut you wish to assign from the Keyboard Shortcut pop-up menu. The following image shows the items listed in this menu.



To select one of the items from this menu, simply click on that item in the list. The menu will automatically close, and your selected item will be displayed under the “Keyboard Shortcut:” line.

Type Special Key

When you select the Type Special Key option, you can select a function to apply from the Special Key pop-up menu. The following image shows the items listed on this menu.

To select one of the items from this menu, simply click on that item in the list. The menu will automatically close, and your selected item will be displayed under the “Special key to type:” line.



Mouse Wheel Up / Down / Left / Right

The Mouse Wheel assignment options allow you to use the NuLOOQ navigator to send a mouse wheel action to the host application. Mouse Wheel Up will generate an upward mouse wheel movement, Mouse Wheel Down will generate a downward mouse wheel movement, and so forth. The specific results of each of these actions will depend upon the application in question. Please refer to the documentation accompanying your host application for information as to how mouse wheel movements are configured within that application.

Open Special Item

When you select the Open Special Item option, you can select a program or folder to open from the Special Item pop-up menu. The following image shows the items listed on this menu.



To select one of the items from this menu, simply click on that item in the list. The menu will automatically close, and your selected item will be displayed under the “Predefined item to open:” line.

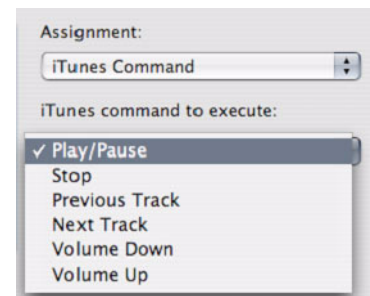
Open Item

When you select the Open Item option, the Preference Pane will display a field in which you can enter the path and filename of the item you wish to open. Alternatively, you can click the Choose button, which will open a standard Finder window from which you can browse to your desired item. When you have selected your item in this window, click the OK button to apply that item to the selected Control function. The path and filename of the item you selected will appear in the “Item to open:” field.

iTunes Command

When you select the iTunes Command option, you can select a specific iTunes application command from the iTunes pop-up menu. The following image shows the items listed on this menu.

To select one of the items from this menu, simply click on that item in the list. The menu will automatically close, and your selected item will be displayed under the “iTunes command to execute:” line.



Sensitivity

You can adjust the sensitivity of *navring* Control functions using the Sensitivity slider. Sensitivity settings control how quickly the *navring* will respond to manipulation. Low sensitivity will require more movement, while high sensitivity will cause an immediate response.

To adjust the sensitivity of the *navring*, click on the Sensitivity slider below the Control menu, and slide it to the left to decrease the degree of sensitivity, or to the right to increase the degree of sensitivity.

NOTE

THE SENSITIVITY SLIDER ADJUSTS THE OVERALL SENSITIVITY OF ALL CONTROL FUNCTIONS. HOWEVER, ZOOM PERFORMANCE MAY BE AFFECTED BY THE COMPLEXITY OF THE GRAPHIC IMAGE, AS WELL AS BY YOUR SYSTEM'S PROCESSOR.

Speed

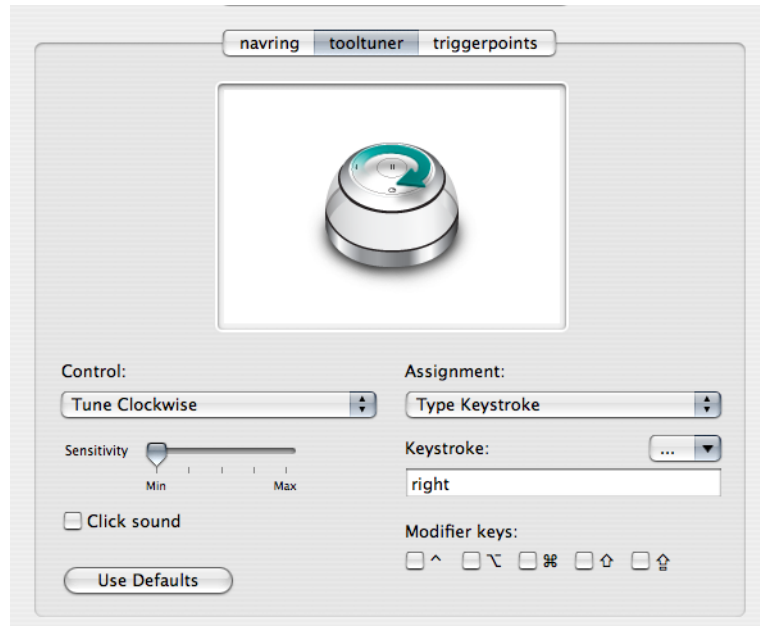
The Speed setting controls the speed at which an action from the Assignment menu will function within the host application. For example, low speed will cause the image or document to Scroll or Zoom slowly, whereas high speed will result in faster Scrolling and Zooming.

NOTE

SCROLL OR ZOOM PERFORMANCE SPEED WILL BE DETERMINED BY THE COMPLEXITY OF THE IMAGE OR DOCUMENT, AS WELL AS GRAPHICS AND CPU SPEED.

To adjust the speed of the Assignment actions, click on the Speed slider below the Control menu, and slide it to the left to decrease the speed, or to the right to increase the speed.

The *tooltuner* Tab



The *tooltuner* tab allows you to configure the *tooltuner dial* of the NuLOOQ navigator.

Control

The Control menu within the *tooltuner* tab allows you to select a particular *tooltuner dial* Control. Select either “Tune Clockwise” or “Tune Counter Clockwise” from the Control menu, and then select an item from the Assignment menu to assign that action to your selected Scroll function.

Assignment

The Assignment options are described in detail in the preceding “The *navring* Tab” section. Please refer to “Assignment” on page 18 for more information about these options.

Sensitivity

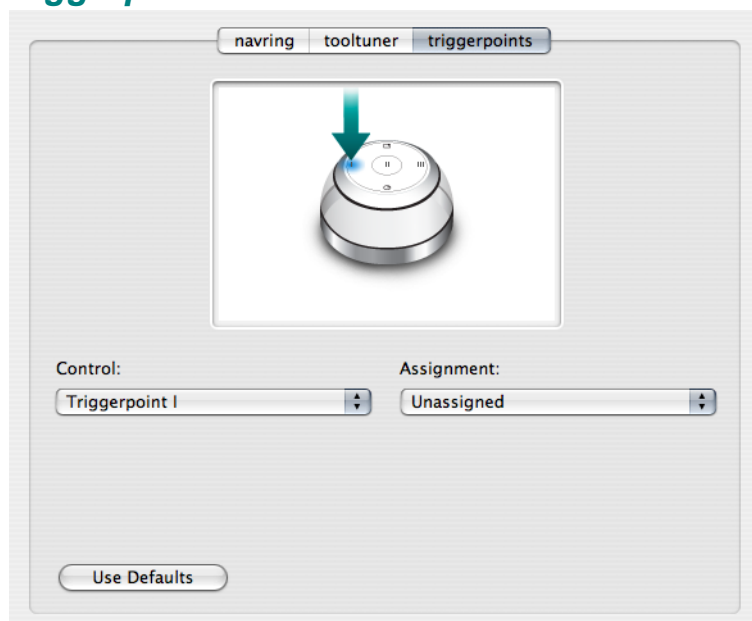
The Sensitivity slider allows you to adjust the sensitivity of the *tooltuner dial*. This setting affects both the Static Value Control and Dynamic Value Control features. (See “The *tooltuner dial*” on page 7 for more information about these features.)

To adjust the *tooltuner dial* sensitivity, click on the Sensitivity slider and move it to the left to decrease the degree of sensitivity, or to the right to increase the degree of sensitivity.

Click Sound

The Click Sound checkbox allows you to specify whether the *tooltuner dial* makes a click sound as you glide your finger around the surface. Checking this box enables the click sound, and unchecking it disables the sound.

The *triggerpoints* Tab



The *triggerpoints* tab allows you to configure the three programmable *triggerpoints* (buttons) on the surface of the *tooltuner dial*.

Control

The Control menu within the *triggerpoints* tab allows you to select one of the three programmable *triggerpoints* to configure.

NOTE

TRIGGERPOINTS I AND III ARE MECHANICAL BUTTONS, WHILE TRIGGERPOINT II IS A QUICK-TAP BUTTON FOR FAST EXECUTION OF THE ASSIGNED ACTION.

Once you have selected the *triggerpoint* you wish to configure, you can select an item from the Assignment menu. After you have assigned an action, click the Apply button at the bottom of the Preference Pane to save your preferences.

Assignment

The Assignment options are described in detail in the preceding “The *navring* Tab” section. Please refer to “Assignment” on page 18 for more information about these options.

Chapter 4 NuLOOQ Support

Contact Us

You may obtain support for your NuLOOQ Professional Series in one of the following ways:

- Telephone: Within the United States, call **702-269-3457** Mon-Fri, 6am - 6pm PST
- Internet: **www.logitech.com/nulooq/support**

Logitech Hardware Product Limited Warranty

Logitech warrants that your Logitech hardware product shall be free from defects in material and workmanship for a period of three (3) years beginning from the date of purchase. This warranty is nontransferable and is limited to the original purchaser. This warranty gives you specific legal rights, and you may also have other rights which vary under local laws.

Remedies

Logitech's entire liability and your exclusive remedy for any breach of warranty shall be, at Logitech's option, to (1) repair or replace the hardware, or (2) refund the price paid, provided that the hardware is returned to the point of purchase or such other place as Logitech may direct with a copy of the sales receipt or dated itemized receipt. Shipping and handling charges may apply. Logitech may, at its option, use refurbished or used parts to repair or replace any hardware product. Any replacement hardware product will be warranted for the remainder of the original warranty period or thirty (30) days, whichever is longer.

This warranty does not cover problems or damage resulting from (a) accident, abuse, misapplication, or any unauthorized repair, modification or disassembly; (b) improper operation or maintenance, usage not in accordance with product instructions or connection to improper voltage supply; or (c) use of consumables, such as replacement batteries, not supplied by Logitech.

How to Obtain Warranty Support

Before submitting a warranty claim, we recommend you visit the support section at www.logitech.com for technical assistance. Valid warranty claims are generally processed through the point of purchase during the first thirty (30) days after purchase; however, this period of time may vary depending on where you purchased your product – please check with Logitech or the retailer where you purchased your product for details. Warranty claims that cannot be processed through the point of purchase and any other product related questions should be addressed directly to Logitech. The addresses and customer service contact information for Logitech can be found in the documentation accompanying your product and on the web at www.logitech.com/contactus.

Limitation of Liability

LOGITECH SHALL NOT BE LIABLE FOR ANY INCIDENTAL OR CONSEQUENTIAL DAMAGES FOR BREACH OF ANY EXPRESS OR IMPLIED WARRANTY ON YOUR PRODUCT. Some jurisdictions do not allow the exclusion or limitation of incidental or consequential damages, so the above limitation or exclusion may not apply to you.

Duration of Implied Warranties

EXCEPT TO THE EXTENT PROHIBITED BY APPLICABLE LAW, ANY IMPLIED WARRANTY OF MERCHANTABILITY OR FITNESS FOR A PARTICULAR PURPOSE ON THIS HARDWARE PRODUCT IS LIMITED IN DURATION TO THE DURATION OF THE APPLICABLE LIMITED WARRANTY PERIOD FOR YOUR PRODUCT. Some jurisdictions do not allow limitations on how long an implied warranty lasts, so the above limitation may not apply to you.

No Other Warranties

No Logitech dealer, agent, or employee is authorized to make any modification, extension, or addition to this warranty.

Appendix A Static Value Control Specifications

Photoshop Static Value Control

The following table lists the Adobe Photoshop tools, and their specific options and values, that can be adjusted using the NuLOOQ *navigator's* Static Value Control feature.

NOTE

UNLESS OTHERWISE STATED, THE VALUES IN THIS TABLE ARE INCREMENTED BY ONE.

Table 1: Photoshop Tools

Tool(s)	Option(s)	Range of Values
Marquee Tools: Rectangular Marquee Tool Elliptical Marquee Tool Single Row Marquee Tool Single Column Marquee Tool	Feather	0 - 250 pixels
Lasso Tool	Feather	0 - 250 pixels
Polygonal Lasso Tool	Feather	0 - 250 pixels
Magnetic Lasso Tool	Feather Width Edge Contrast Frequency	0 - 250 pixels 1 - 256 pixels 1 - 100 % 1 - 100
Magic Wand Tool	Tolerance	0 - 255
Spot Healing Brush Tool	Brush Size Diameter Hardness Spacing	1 - 2500 0 - 100 % 1 - 1000 %
Healing Brush Tool	Brush Size Diameter Hardness Spacing	1 - 2500 0 - 100 % 1 - 1000 %
Color Replacement Tool	Brush Size Diameter Hardness Spacing	1 - 2500 0 - 100 % 1 - 1000 %
Brush Tool	Brush Size Diameter Hardness Opacity Flow	1 - 2500 0 - 100 % 1 - 100 % 1 - 100 %
Pencil Tool	Brush Size Diameter Hardness Opacity	1 - 2500 0 - 100 % 1 - 100 %
Clone Stamp Tool	Brush Size Diameter Hardness Opacity Flow	1 - 2500 0 - 100 % 1 - 100 % 1 - 100 %

Table 1: Photoshop Tools

Tool(s)	Option(s)	Range of Values
Pattern Stamp Tool	Brush Size Diameter Hardness Opacity Flow	1 - 2500 0 - 100 % 1 - 100 % 1 - 100 %
History Brush Tool	Brush Size Diameter Hardness Opacity Flow	1 - 2500 0 - 100 % 1 - 100 % 1 - 100 %
Art History Brush Tool	Brush Size Diameter Hardness Opacity Tolerance Area	1 - 2500 0 - 100 % 1 - 100 % 0 - 100% 0 - 500 pixels
Eraser Tool	Brush Size Diameter Hardness Opacity Flow	1 - 2500 0 - 100 % 1 - 100 % 1 - 100 %
Background Eraser Tool	Brush Size Diameter Hardness Opacity Flow	1 - 2500 0 - 100 % 1 - 100 % 1 - 100 %
Magic Eraser Tool	Tolerance Opacity	0 - 255 1 - 100 %
Gradient Tool	Opacity	1 - 100 %
Paint Bucket Tool	Tolerance Opacity	0 - 255 1 - 100 %
Blur Tool	Brush Size Diameter Hardness Strength	1 - 2500 0 - 100 % 1 - 100 %
Sharpen Tool	Brush Size Diameter Hardness Strength	1 - 2500 0 - 100 % 1 - 100 %
Smudge Tool	Brush Size Diameter Hardness Strength	1 - 2500 0 - 100 % 1 - 100 %
Dodge Tool	Brush Size Diameter Hardness Exposure	1 - 2500 0 - 100 % 1 - 100 %
Burn Tool	Brush Size Diameter Hardness Exposure	1 - 2500 0 - 100 % 1 - 100 %

Table 1: Photoshop Tools

Tool(s)	Option(s)	Range of Values
Sponge Tool	Brush Size Diameter	1 - 2500
	Hardness	0 - 100 %
	Flow	1 - 100 %

InDesign Static Value Control

The NuLOOQ *navigator's* Static Value Control feature supports all toolsets within Adobe InDesign. However, only certain subsets of these tools will be available at any given time for modification via the NuLOOQ *navigator*, depending on whether the Text or Object/Position toolbar is active within InDesign. If the Text toolbar is active, then those tools pertaining to text options will be available for value control via the NuLOOQ *navigator*. If the Object/Position toolbar is active, then those tools pertaining to modification of object or positional options will be available for value control via the NuLOOQ *navigator*. The following tables list the specific options their related value ranges that can be controlled under the Text and Object/Position toolbars.

NOTE

UNLESS OTHERWISE STATED, THE VALUES IN THESE TABLES ARE INCREMENTED BY ONE.

Table 2: Text Toolbar

Option	Range of Values
Font Size	1 - 1296
Leading	0 - 5000
Tracking	-1000 to 10000
Vertical Scale	1 - 1000 %
Baseline Shift	-5000 to 5000
Horizontal Scale	1 - 1000 %
Skew	-85 to 85
Kerning (word spacing)	-1000 to 1000
Font	Cycle through stored fonts

Table 3: Object / Position Toolbar

Option	Range of Values
X	Value range is limited to current page boundaries.
Y	Value range is limited to current page boundaries.

Table 3: Object / Position Toolbar

Option	Range of Values
W	Value range is limited to current page boundaries.
H	Value range is limited to current page boundaries.
Scale X	1 - 1000
Rotation Angle	-180 - 180
Shear Y Angle	-90 - 90
Stroke	0 - 800
Scale Y	1 - 1000
Rotation Angle	-180 - 180
Shear X Angle	-180 - 180

* The value ranges are constrained to the current page, so that the selected image or text box cannot overlap onto an adjacent page.

Illustrator Static Value Control

Within Adobe Illustrator, specific toolbars are supported with regards to individual object(s) that may be selected and acted upon. Each of these toolbars in turn supports different toolsets, for which option values may be specified. The NuLOOQ *navigator's* Static Value Control feature supports all active options on the toolbar currently active within Illustrator at any given time. The following table lists the different toolbars, and their related option value ranges, available for Static Value Control via the NuLOOQ *navigator*.

NOTE

UNLESS OTHERWISE STATED, THE VALUES IN THIS TABLE ARE INCREMENTED BY ONE.

Table 4: Illustrator Tools

Option	Range of Values
X	-16384 - 16384
Y	-16384 - 16384
W	-16384 - 16384
H	-16384 - 16384
Opacity	0 - 100

Appendix B Dynamic Value Control Specifications

Photoshop Dynamic Value Control

The following tables lists the tools and associated options within Adobe Photoshop that support Dynamic Value Control via pressure or tilt.

Table 1: Photoshop Dynamic Value Control

Tool(s)	Option(s)
Brush Tool	Brush Size Angle Jitter Roundness Jitter Scatter Count Jitter Depth Jitter Foreground/Background Jitter Opacity Jitter Flow Jitter
Pencil Tool	Brush Size Angle Jitter Roundness Jitter Scatter Count Jitter Depth Jitter Foreground/Background Jitter Opacity Jitter
Color Replacement Tool	Size *
Spot Healing Brush Tool	Size *
Healing Brush Tool	Size *
Clone Stamp Tool	Brush Size Angle Jitter Roundness Jitter Scatter Count Jitter Opacity Jitter Flow Jitter
Pattern Stamp Tool	Brush Size Angle Jitter Roundness Jitter Scatter Count Jitter Opacity Jitter Flow Jitter

Table 1: Photoshop Dynamic Value Control

Tool(s)	Option(s)
History Brush Tool	Brush Size Angle Jitter Roundness Jitter Scatter Count Jitter Opacity Jitter Flow Jitter
Art History Brush Tool	Brush Size Angle Jitter Roundness Jitter Opacity Jitter Flow Jitter
Eraser Tool	Brush Size Angle Jitter Roundness Jitter Scatter Count Jitter Opacity Jitter Flow Jitter
Background Eraser Tool	Size * Tolerance *
Blur Tool	Brush Size Angle Jitter Roundness Jitter Scatter Count Jitter Strength
Sharpen Tool	Brush Size Angle Jitter Roundness Jitter Scatter Count Jitter Strength
Smudge Tool	Brush Size Angle Jitter Roundness Jitter Scatter Count Jitter Strength
Dodge Tool	Brush Size Angle Jitter Roundness Jitter Scatter Count Jitter Exposure

Table 1: Photoshop Dynamic Value Control

Tool(s)	Option(s)
Burn Tool	Brush Size Angle Jitter Roundness Jitter Scatter Count Jitter Exposure
Sponge Tool	Brush Size Angle Jitter Roundness Jitter Scatter Count Jitter Flow

* These options support dynamic value adjustment via pressure only; tilt is not supported.

Illustrator Dynamic Value Control

The following tables lists the toolsets and associated tools within Adobe Illustrator that support Dynamic Value Control via pressure or tilt..

Table 2: Illustrator Dynamic Value Control

Toolset / Tool(s)	Tools / Options
Liquify Tools (Each of these tools allows enabling or disabling of pressure adjustments by means of a checkbox within Illustrator.)	Forward Warp * Reconstruction * Twirl Clockwise * Pucker * Bloat Push Left * Mirror * Turbulence * Freeze Tool * Thaw Mask Tools *Warp Twirl Pucker Bloat Scallop Crystallize Wrinkle
Symbolism Tools (Each of these tools allows enabling or disabling of pressure adjustments by means of a checkbox within Illustrator.)	When pressure adjustment is enabled, all Symbolism Tools support dynamic value adjustment.

Table 2: Illustrator Dynamic Value Control

Toolset / Tool(s)	Tools / Options
Calligraphic Brush **	Angle Roundness Diameter
Scatter Brush **	Size Spacing Scatter Rotation

* These options support dynamic value adjustment via pressure only; tilt is not supported.

** Illustrator allows the user to configure the dynamic value adjustment ranges for these brush types. The NuLOOQ *navigator*'s Dynamic Value Control feature will operate within these set ranges.

Appendix C End-User License Agreement (EULA)

Logitech Inc. Pre-Release Agreement

This Pre-Release Agreement ("Agreement") is between Logitech Inc. ("Logitech") and you, (hereinafter referred to as "Tester"). Tester shall be evaluating NuLOOQ tool dial and/or NuLOOQ navigator (hereinafter collectively referred to as the "Pre-Release Software"), which shall include any updates or new versions that Tester may receive from Logitech for the term of this Agreement as specified below. This Agreement is effective immediately upon either of the following: (a) if the Tester downloads the Pre-Release Software, Tester's acceptance of this Agreement by pressing the "accept" button and Tester's first use of the Pre-Release Software; or (b) if the Tester receives the Pre-Release Software from Logitech by mail, either (i) upon Tester's acceptance by signing and returning this Agreement to Logitech or (ii) upon Tester's acceptance of this Agreement by pressing the "accept" button, and Tester's first use of any Pre-Release Software. In consideration for your participation in the Pre-Release program, you will receive a free version of either the NuLOOQ tool dial and/or the NuLOOQ navigator, depending upon which product (s) you beta test, when such product becomes generally commercially available.

Tester agrees as follows to use solely for the purposes of evaluating and testing Logitech's unreleased software and any related information ("Pre-Release Software"):

1.0 Confidential Information, Scope of Use and Tester Obligations

1.1 Tester agrees that the Pre-Release Software, including the existence of this Pre-Release Software, performance, features, capabilities, and potential shipment dates of the Pre-Release Software, and any other information which is identified by Logitech as confidential is "Confidential Information." Tester agrees not to disclose to or allow any third party to access or use the Confidential Information. Tester further agrees that Tester will be the only one authorized to use the Confidential Information for evaluation and/or testing and discussions with authorized representatives of Logitech. Tester agrees that Tester is not an employee or contractor of a competitor of Logitech, and Tester shall not use the Confidential Information for the creation and/ or the development of any competing products.

1.2. Tester agrees not to make any copies of the Pre-Release Software, in whole or in part, except as expressly allowed by an authorized representative of Logitech. This Agreement does not authorize Tester to make any modifications to or adaptations of any part or whole of the Pre-Release Software or to merge the Pre-Release Software into other programs or other materials, and any such modification, adaptation or merging is expressly prohibited. Tester agrees not to decompile, disassemble, or otherwise reverse engineer the Pre-Release Software.

1.3 Tester agrees to supply Logitech with prompt feedback regarding the features and functionality of the NuLOOQ tool dial and/or the NuLOOQ navigator as applicable either by email, phone or online submission.

2.0 Logitech Obligations.

Logitech shall supply Tester with a copy of the Pre-Release Software and any necessary information regarding use of the Pre-Release Software.

3.0 Warranty Disclaimer.

Tester understands that the Pre-Release Software is a pre-release version and does not represent a final product from Logitech. Tester also understand that the Pre-Release Software may contain, errors, “bugs” and other problems which may result in system failure or failure in the use of the Pre-Release Software or loss of data. Consequently, it is provided to Tester "AS IS", and Logitech disclaims any warranty or liability obligations to Tester of any kind. Tester understand and agrees that NEITHER LOGITECH NOR ANY THIRD PARTY LICENSORS OR DISTRIBUTORS ("REPRESENTATIVES") MAKE ANY EXPRESS, IMPLIED, OR STATUTORY WARRANTY OR CONDITION OF ANY KIND FOR THE SOFTWARE INCLUDING, BUT NOT LIMITED TO, ANY WARRANTY OR CONDITION WITH REGARD TO PRE-RELEASE PERFORMANCE, MERCHANTABILITY, OR FITNESS FOR ANY PARTICULAR PURPOSE. IN NO EVENT WILL Logitech OR ANY OF ITS REPRESENTATIVES BE LIABLE FOR (i) PUNITIVE, EXEMPLARY OR AGGRAVATED DAMAGES; (ii) ANY DIRECT OR INDIRECT DAMAGES, INCLUDING ANY LOST PROFITS, LOST SAVINGS OR ANY OTHER INCIDENTAL OR CONSEQUENTIAL DAMAGES EVEN IF LOGITECH OR ANY OF ITS REPRESENTATIVES HAS BEEN ADVISED OF THE POSSIBILITY OF SUCH DAMAGES; OR (iii) FOR ANY CLAIM BY ANY OTHER PARTY. TESTER ACKNOWLEDGES AND AGREES THAT IT BEARS THE ENTIRE RISK AS TO THE QUALITY AND PERFORMANCE OF THE PRE-RELEASE SOFTWARE. Some jurisdictions do not allow the exclusion or limitation of incidental or consequential damages or the limitations on implied warranties, so the above limitations and exclusions may not apply to you.

4.0 Term and Termination.

4.1 Term.

Tester obligations with respect to the Confidential Information as set forth above shall terminate when Tester either (i) receives written notice from Logitech that Tester can disclose the Confidential Information to someone or the public, or (ii) the Confidential Information has been disclosed to the public by Logitech or (iii) thirty-six (36) months following the date of the public release of the Pre-Release Software as a final product.

4.2 Termination.

- (a) Tester may terminate the license but not the confidentiality obligations at any time by notifying Logitech and by either returning to Logitech or destroying the Pre-Release Software and related information.
- (b) Logitech may terminate Tester’s license immediately if Tester fails to comply with any term or condition of this Agreement.
- (c) Logitech further reserves the right to terminate this Agreement on fifteen (15) days prior notice.
- (d) Tester agrees that upon any termination, Tester will promptly return or destroy the Pre-Release Software and related information if requested by Logitech and provide Logitech with an officer’s certificate verifying such destruction. The provisions of Paragraphs 1, 3, 4.1, 5, 6 and 7 shall survive any termination of this Agreement.

5.0 Proprietary Rights.

All Confidential Information, the Pre-Release Software, and any materials furnished to Tester by Logitech and any information or materials which are designated in writing to be the property of Logitech shall remain the sole property of Logitech.

6.0 Export.

Tester acknowledges that the Pre-Release Software may be subject to U.S. export control restrictions and agrees not to export or re-export the Software in any form whatsoever outside the United States without the appropriate United States and foreign government licenses and the express written permission from Logitech.

7.0 General Provisions.

7.1 This Agreement shall be governed in all respects by the internal laws of the State of California excluding its conflicts or choice of law provisions and Tester agrees to submit to personal jurisdiction in the State of California.

7.2 Notices between the parties shall be by personal delivery, facsimile transmission, or certified or registered mail, return receipt requested, and shall be deemed given upon receipt at the address of the recipient party or ten days after deposit in the mail. Addresses used shall be the ones set forth below or such other address as a party hereto shall notify the other in writing. If the notice is to Logitech, it shall be sent to the attention of:

Legal Department
Logitech, Inc.
180 Knowles Drive, Suite 100
Los Gatos, CA 95032

7.3 In the event of any invalidity of any provision of this Agreement, the parties agrees that such invalidity shall not affect the validity of the remaining portions of this Agreement, and further agrees to substitute for the invalid provision a valid provision which most closely approximates the intent and economic effect of the invalid provision.

7.4 This agreement constitutes the entire understanding and agreement between the parties with respect to the subject matter addressed herein and supersedes any and all prior or contemporaneous oral or written communications with respect to the subject matter hereof, all of which are merged herein. You may not assign your rights and obligations under this agreement without the prior written consent of an authorized representative of Logitech.

7.5 You are not eligible to participate in this Prerelease Software Program if you have a possible conflict of interest which shall include being an employee of Logitech's or its subsidiaries' competitors. Such competitors include but are not limited to Wacom Technology and Spatial Freedom Inc. Logitech will view any violation of these conditions as serious and a breach of the Agreement.

Index

A

- About NuLOOQ navigator 16
- Adding Applications 14
- Assignment 26
- Assignment Options 18

C

- Configuration
 - Export 15
 - Import 15
 - On/Off 16
- Configuring
 - navring 18
 - tooltuner dial 25
 - triggerpoints 26

D

- Disable Configuration 16
- Dynamic Value Control 11

E

- Enable Configuration 16
- Exporting Configurations 15

I

- Importing Configurations 15
- Installing Plug-ins 16

N

- navring 8
 - Assignment Menu 18
 - Configuration 18
 - Control Menu 18
 - Scroll 9
 - Sensitivity 25
 - Speed 25
 - Twist 9
- NuLOOQ navigator
 - About 16

P

- Preference Pane
 - Configure Menu 14

navring Tab 18
tooltuner Tab 25
triggerpoints Tab 26

R

Removing Applications 14

S

Scrolling the Image 9
Selecting Applications 14
Static Value Control 9

T

tooltuner dial 7
 Assignment Menu 26
 Click Sound 26
 Configuring 25
 Control Menu 26
 Sensitivity 26
triggerpoints
 Assignment Menu 27
 Configuring 26
 Control Menu 26
 Dynamic Value 11
 Programmable 8
 Static Value 9

Z

Zoom Navigation 9